

# EXAMINING ARTIST INTENTIONS

---



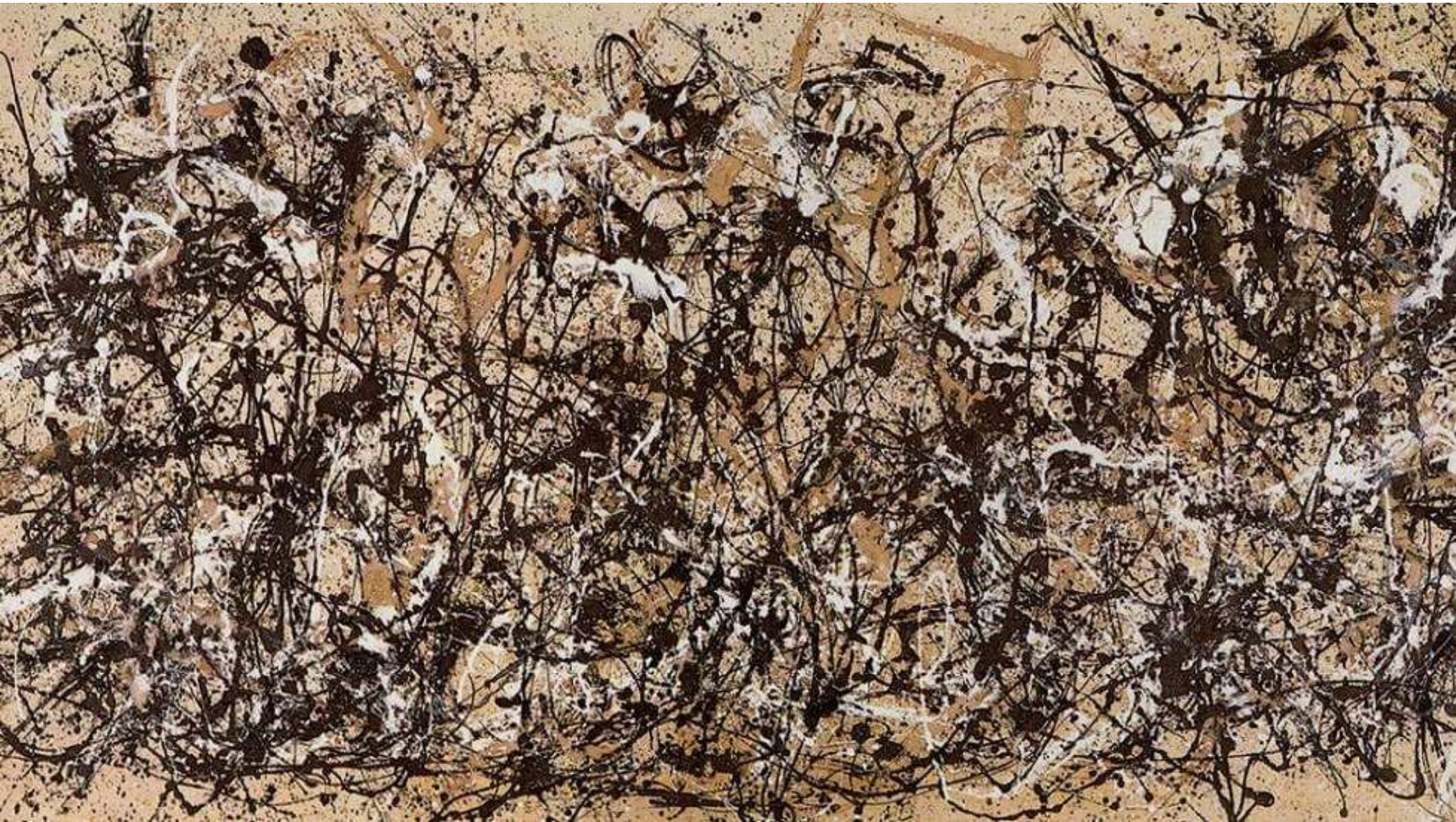


## WASHINGTON CROSSING THE DELAWARE EMANUEL LEUTZE, 1851

---

This painting is a commemoration of a Revolutionary war moment when Washington crossed the Delaware River on Christmas night in 1776 to launch an attack on the Hessians stationed in New Jersey. It presents a very romanticized picture with several historical inaccuracies. Leutze hoped that the picture would motivate European Revolutionaries in 1848.







## AUTUMN RHYTHM JACKSON POLLOCK, 1950

---

Jackson Pollock on one of the best known artists part of the abstract expressionism movement and action painting where the process of creating art was considered almost as important as the art itself, and focuses on a spontaneous overflow of artistic feelings and 'pure creation.'



## ORIENTAL POPPIES GEORGIA O'KEEFFE, 1928

---

Some of Georgia O'Keeffe's best known works are her magnified paintings of flowers. In the artist's own words:

"If I could paint the flower exactly as I see it no one would see what I see because I would paint it small like the flower is small. So I said to myself- I'll paint what I see- what the flower is to me, but I'll paint it big and they will be surprised into taking time to look at it- I will make even busy New Yorkers take time to see what I see of flowers."





MIGRATION

MIGRACIÓN



ENDANGERED SPECIES MURAL  
PROJECT  
CENTER FOR BIOLOGICAL  
DIVERSITY, ASSORTED ARTISTS

---

- A series of murals was put up around the United States to celebrate different endangered species. The project is spearheaded by Roger Peet, a Portland artist and works with local artists in various communities. (The Monarch Migration mural is located locally in Minneapolis)



ENDANGERED SPECIES MURAL  
PROJECT  
CENTER FOR BIOLOGICAL  
DIVERSITY, ASSORTED ARTISTS

---

- A series of murals was put up around the United States to celebrate different endangered species. The project is spearheaded by Roger Peet, a Portland artist and works with local artists in various communities. (The Monarch Migration mural is located locally in Minneapolis)



ENDANGERED SPECIES MURAL  
PROJECT  
CENTER FOR BIOLOGICAL  
DIVERSITY, ASSORTED ARTISTS

---

- A series of murals was put up around the United States to celebrate different endangered species. The project is spearheaded by Roger Peet, a Portland artist and works with local artists in various communities. (The Monarch Migration mural is located locally in Minneapolis)



## WHEATFIELD, A CONFRONTATION AGNES DENES, 1982

---

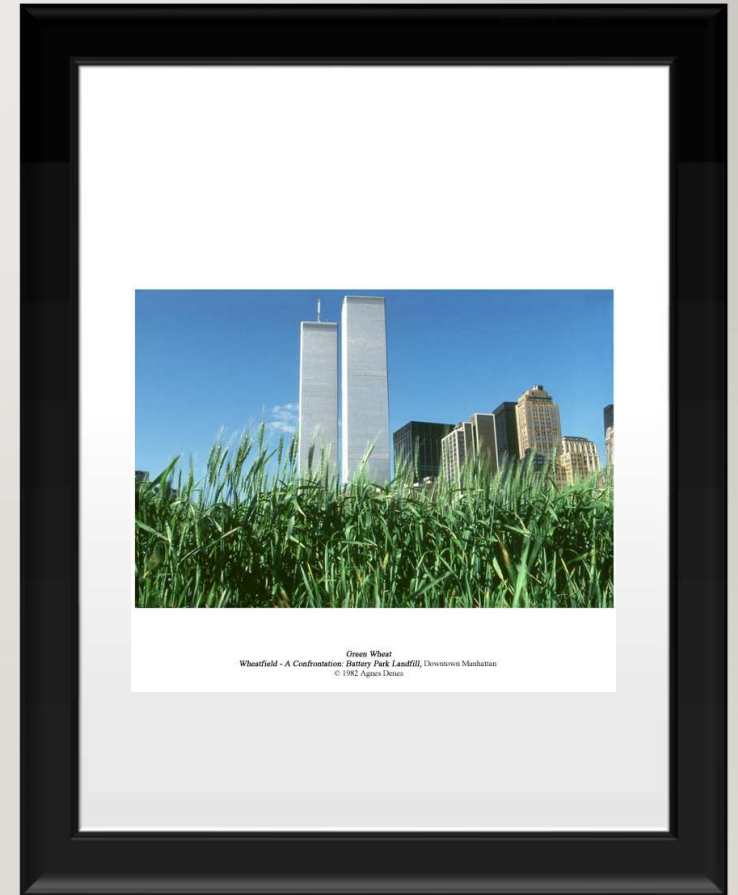
These images are from a project by Agnes Denes who converted 2 acres of landfill in downtown Manhattan into a wheat field with the help of many volunteers. Over 1000 pounds of wheat were harvested. Some went to New York's mounted police and some seeds were sent all over the world where other artists recreated the installation in their own cities.



## WHEATFIELD, A CONFRONTATION AGNES DENES, 1982

---

These images are from a project by Agnes Denes who converted 2 acres of landfill in downtown Manhattan into a wheat field with the help of many volunteers. Over 1000 pounds of wheat were harvested. Some went to New York's mounted police and some seeds were sent all over the world where other artists recreated the installation in their own cities.



## WHEATFIELD, A CONFRONTATION AGNES DENES, 1982

---

These images are from a project by Agnes Denes who converted 2 acres of landfill in downtown Manhattan into a wheat field with the help of many volunteers. Over 1000 pounds of wheat were harvested. Some went to New York's mounted police and some seeds were sent all over the world where other artists recreated the installation in their own cities.







## WASHED ASHORE ASSORTED WORKS

---

Washed Ashore is an organization with a team of artists and volunteers who collect plastic pollution when cleaning beaches and use the plastic to create sculptures over frames of stainless steel. There are over 70 sculptures, all of animals that are endangered by plastic pollution.



## WASHED ASHORE ASSORTED WORKS

---

Washed Ashore is an organization with a team of artists and volunteers who collect plastic pollution when cleaning beaches and use the plastic to create sculptures over frames of stainless steel. There are over 70 sculptures, all of animals that are endangered by plastic pollution.



## WASHED ASHORE ASSORTED WORKS

---

Washed Ashore is an organization with a team of artists and volunteers who collect plastic pollution when cleaning beaches and use the plastic to create sculptures over frames of stainless steel. There are over 70 sculptures, all of animals that are endangered by plastic pollution.

# WORKS CITED

---

- <https://www.thevintagenews.com/2019/03/31/washington-crossing-the-delaware/>
- <https://www.jackson-pollock.org/autumn-rhythm.jsp>
- <http://agnesdenesstudio.com/works7.html>
- [https://www.biologicaldiversity.org/about/creative\\_media/endangered\\_species\\_mural\\_project/](https://www.biologicaldiversity.org/about/creative_media/endangered_species_mural_project/)
- <https://washedashore.org/>
- <https://www.britannica.com/topic/Mona-Lisa-painting>
- <https://www.biography.com/artist/georgia-okeeffe>