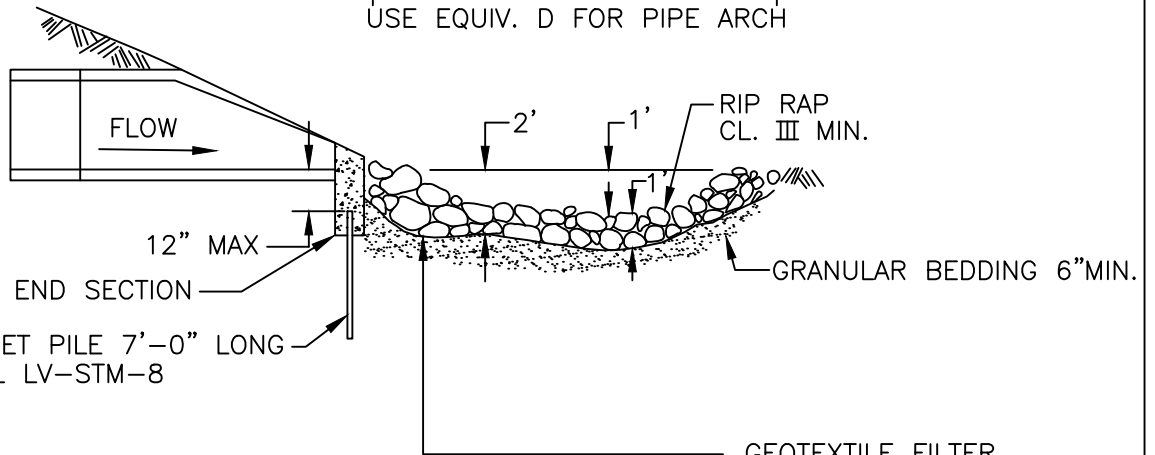
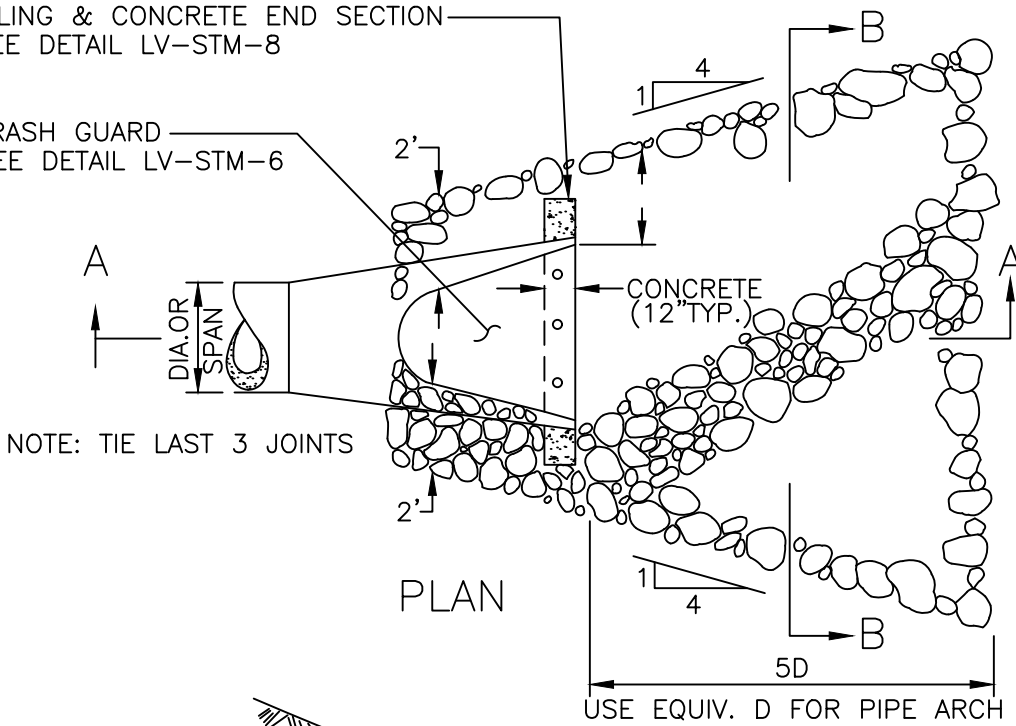


SECTION B-B

PILING & CONCRETE END SECTION
SEE DETAIL LV-STM-8

TRASH GUARD
SEE DETAIL LV-STM-6



SECTION A-A

NOTE: PILING & CONCRETE END SECTION
CONSTRUCTED ON 21" DIAMETER
PIPE F.E.S. OR LARGER

GEOTEXTILE FILTER,
MNDOT TYPE IV INCIDENTAL
TO CONSTRUCTION OF
RIP RAP



STORM SEWER
HAND PLACE
RIP RAP

PLATE NO. LV-STM-7

DATE 02/2024