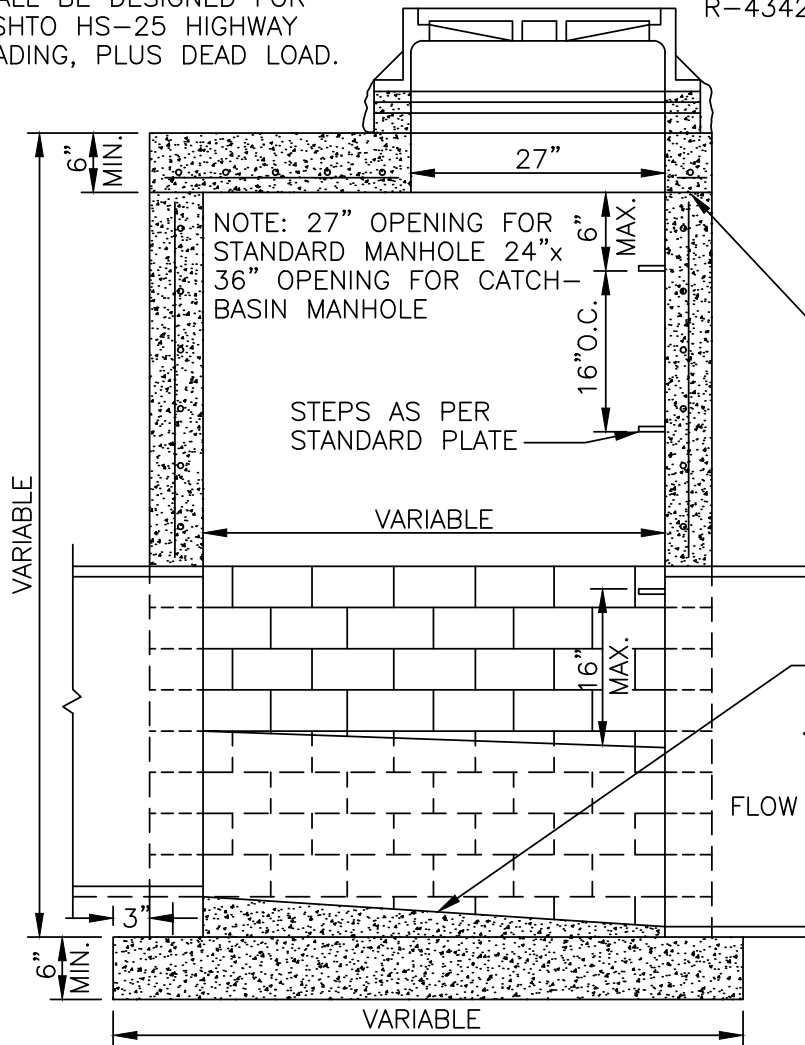


PRECAST CONCRETE TOP SLAB SHALL BE DESIGNED FOR AASHTO HS-25 HIGHWAY LOADING, PLUS DEAD LOAD.

ESS BROS. MCI-309, OR NEENAH CASTING NO.1642, W/2 CONCEALED PICKHOLES AND THE WORDS "STORM SEWER" STAMPED ON THE COVER. OR APPROVED EQUAL R-4342 IF INLET



MIN. 2 CONCRETE ADJUSTING RINGS. MAX OF 1' OF RINGS. THE CONTRACTOR SHALL USE A 6" ADJUSTING RING IF THE REQUIRED ADJUSTMENT IS BETWEEN 8" AND 1'.

JOINT FILLER TO BE RAM-NECK OR APPROVED EQUAL UNDER TOP SLAB AND ALSO CASTINGS NOT IN PAVED AREAS

CONCRETE SEWER BLOCK MAY BE USED WITH MORTARED EXTERIOR

CONCRETE FILL

ALL GROUTING MUST BE AN APPROVED NON-SHRINKABLE GROUT MIX.

ALL EXTERIOR JOINTS (BASE TO CONE) SHALL BE SEALED WITH GATOR WRAP BRAND BUTYL WRAP, OR APPROVED EQUAL AT LEAST 12-INCHES WIDE.

NOTE:

1. BLOCK MANHOLE CONSTRUCTION SHALL ONLY BE USED WHEN A PRECAST MAY NOT BE FABRICATED FOR THE PARTICULAR APPLICATION AND APPROVED BY THE ENGINEER.
2. THIS MANHOLE TYPE TO BE USED IN LIEU OF STANDARD MANHOLE WHEN MANHOLE DEPTH IS LESS THAN 10 FEET AND OR WHEN MANHOLE DIAMETER IS GREATER THAN 4'-0" AS SPECIFIED OR AS SHOWN ON THE PLANS.
3. ON MANHOLES WITH PIPE DIAMETER(S) GREATER THAN 36", CONSTRUCT BENCH WITH CONCRETE FILL TO CROWN OF HIGHEST PIPE. ON MANHOLES WITH PIPE DIAMETER(S) OF 36" OR LESS. CONSTRUCT BENCH WITH CONCRETE FILL TO SPRINGLINE OF PIPES. SLOPE FLOOR TO PROVIDE SMOOTH FLOW FROM INLET TO OUTLET.
4. PRECAST CONCRETE MANHOLE SECTIONS AND BASE SHALL BE ACCORDING TO ASTM C-478 W/O-RING JOINTS.



STANDARD STORM SEWER  
SLAB-TOP MANHOLE  
(48" INSIDE DIAMETER)

PLATE NO. LV-STM-5

DATE 02/2024