

2" SCREEN GOOSENECK STEEL VENT PIPE (PAINTED GREEN)

ESS BROS. MCI-309, OR NEENAH CASTING NO.1642, W/2 CONCEALED PICKHOLES AND THE WORDS "SANITARY SEWER" STAMPED ON THE COVER. OR APPROVED EQUAL

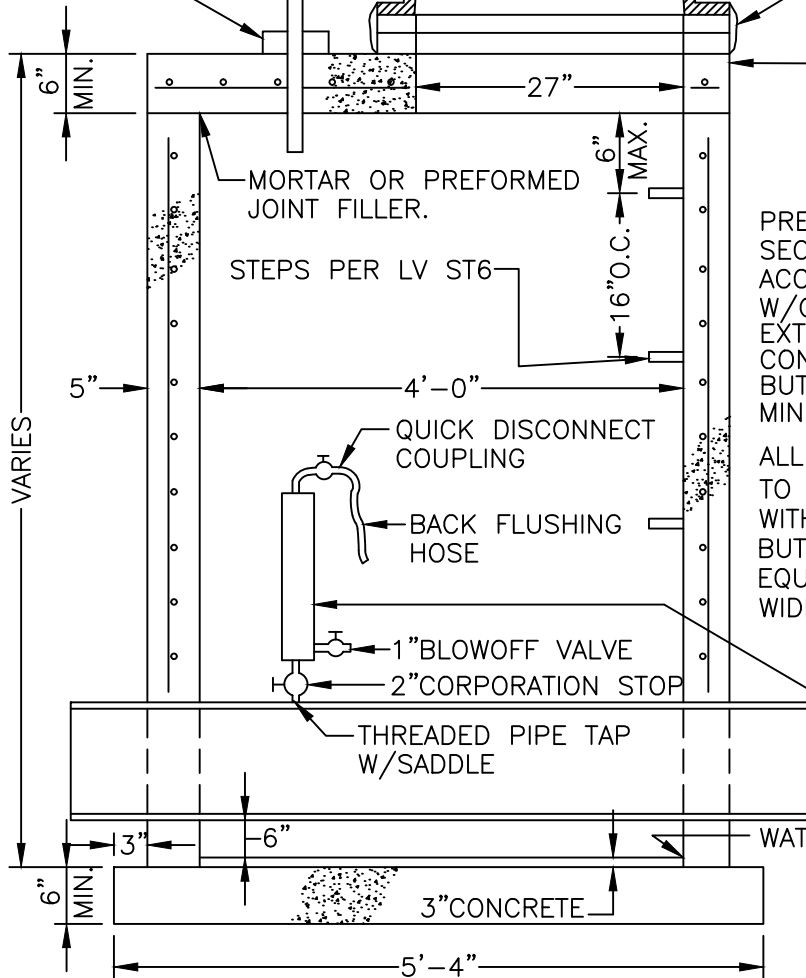
MIN, 2 CONCRETE ADJUSTING RINGS. MAX OF 1' OF RINGS. THE CONTRACTOR SHALL USE A 6" ADJUSTING RING IF THE REQUIRED ADJUSTMENT IS BETWEEN 8" AND 1'.

RAM-NECK JOINT FILLER UNDER CASTINGS NOT IN PAVED AREAS.

CONSTRUCT 6"x6"x6" CONCRETE COLLAR

36" TYP.

INFI-SHIELD CHIMNEY SEAL OR APPROVED EQUAL.



PRECAST CONCRETE TOP SLAB SHALL BE DESIGNED FOR AASHTO HS-25 HIGHWAY LOADING PLUS DEAD LOAD.

PRECAST CONCRETE MANHOLE SECTIONS AND BASE SHALL BE ACCORDING TO ASTM C-478 W/O-RING JOINTS. ALL EXTERIOR JOINTS (BASE TO CONE) TO BE SEALED WITH BUTYL WRAP AND PRIMER A MINIMUM 16" WIDE.

ALL EXTERIOR JOINTS (BASE TO CONE) SHALL BE SEALED WITH GATOR WRAP BRAND BUTYL WRAP, OR APPROVED EQUAL AT LEAST 12-INCHES WIDE.

COMBINATION SEWAGE AIR VALVE (APCO MODEL 401/400 OR EQUAL)

WATERTIGHT SEAL

MANHOLE CONNECTION PER SPEC. UC 3.04 GROUT AROUND PIPE CONNECTIONS.

NOTE: IF MANHOLE IS IN AN IMPERVIOUS AREA VENT PIPE MAYBE VENTED INSIDE MANHOLE



SANITARY SEWER
AIR RELEASE MANHOLE
(FORCEMAIN)

PLATE NO. LV-SS-5

DATE 02/2024