



214th Street Reconstruction

2026 Misc Roadway Repairs & Overlays Project

Project Scope

- A. Remove and replace severely damaged curb & gutter
- B. Watermain repairs and cathodic protection
- C. Storm sewer improvements and adjustments
- D. Full depth pavement removal and install new base
- E. Turf restoration



A. Replacement of Curb and Gutter

Sections of curb and gutter that are severely damaged, do not allow the flow of storm water, and curb impacted by underground utility work will be replaced as part of this project. Prior to construction City staff will mark curb and gutter in need of replacement with white paint.



Project Schedule



- Typically the project is broken out into phases by neighborhood. Each "Phase" of the project is under construction for a period of 5-7 weeks depending on the size of the neighborhood.

B. Watermain Remove and Replacement

The City of Lakeville is taking a proactive approach to reduce the amount of costly watermain breaks by completing upgrades to the existing system during street projects. Watermain repairs and installing cathodic protection will help protect the watermain system for many years to come. This work will also help to limit shutdowns during water tower maintenance.

Working hours during construction

- Monday - Friday 7:00am to 8:00pm
- Saturday 8:00am to 5:00pm
- No work on Sundays or Holidays



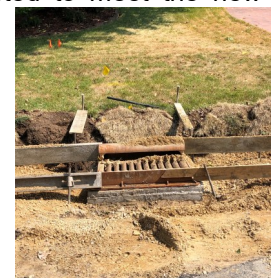
Construction Site Safety and Guidelines

- Roads will remain open to traffic during construction, unless otherwise posted. Please reduce vehicle speed while traveling through construction areas
- Please use caution around equipment, materials, and trenches. Avoid these obstacles whenever possible.
- Access to your property will be maintained to the fullest extent possible. City staff will provide door hanger notices in the event of limited property access.
- Survey stakes and utility location flags are important for project progress and safety, please do not remove these until construction has been completed.



C. Storm and Sanitary Sewer Repairs/Adjustments

Prior to street projects City staff complete inspections of the existing storm and sanitary sewer systems. Largely these systems are in good condition but some replacements will be necessary. All storm and sanitary sewer manholes and grates will be adjusted to meet the new asphalt pavement elevation.



D. Full Depth Pavement Removal

Full depth pavement reclamation is a process which grinds up the existing asphalt roadway and mixes the asphalt together with the gravel base. This process creates a stronger gravel material to utilize for the roadbed.

Following the reclamation process the contractor will use grading equipment to shift the good gravel and dig out unsuitable subgrade materials and replace with sand. The newly created gravel will then be placed back over the sand and reshaped prior to paving.

Once the roadbed has been reshaped paving crews will install the first layer of asphalt.



Reclamation of existing asphalt



Installation of new asphalt surface

E. Turf Restoration

Excavation typically occurs in turf areas near curb and gutter replacement, fire hydrants, and storm sewers. These turf areas disturbed by construction will be restored with topsoil and seed. The contractor is required to maintain the restored areas for a period of 45 days following installation. Upon acceptance by the City, responsibility of the restored areas is returned to the property owners.



Mowing and Maintenance of Restored Areas:

- Please do not walk or drive on restored areas until fully established.
- Refrain from mowing restored areas until the grass reaches a height of 6 inches. The recommended height to mow restored areas for the first year is 4 inches. Keeping a slightly higher lawn encourages a deeper root system and has better drought resistance.
- Any additional watering efforts by the property owner is greatly appreciated and helps establish turf quickly.

Additional Comment, Questions, or Concerns?

Please visit the City of Lakeville's website at:

www.lakevillemn.gov

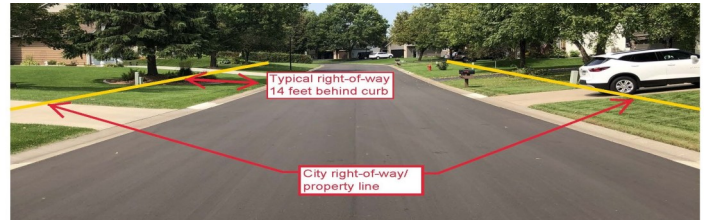


City Projects

Click on the "City Projects" icon to access information about current construction projects, view frequently asked questions and sign up for weekly e-mail updates

City Right-of-Way and Private Features

The public boulevard area is located from the back of curbing to your property line, usually 14 feet is standard. The public boulevard area is a public right-of-way reserved solely for the installation of public utilities and snow storage.

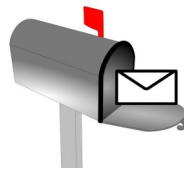


The contractor will salvage, reinstall, or repair existing private features as needed. Private features include:

- Landscaping (rocks/boulders, edging, mulch, pavers, etc.)
- Irrigation or sprinkler systems
- Pet containment systems (Invisible fence)

Ornamental plants will not be replaced by the contractor if damaged. If you wish to protect ornamental plants from damage during construction temporarily remove them from City right-of-way.

Mail Service



During the course of the project existing mailboxes may be need to be removed to complete the work. These mailboxes will be re-installed (to USPS standards) by the contractor to their original location following construction.

The contractor will install temporary mailboxes in a location away from active construction, as directed by the Post Office, to ensure mail service continues during construction. City staff will deliver door hanger notices with further details of temporary mail measures.

Garbage Service

During construction garbage haulers typically have access to the front of your home to collect receptacles. In the event haulers would not be able to access your property, the contractor would move the receptacles to an area for collection and return them to your property.



Primary Project Contact

Steve Ferraro, Public Works Coordinator
sferraro@lakevillemn.gov
(952) 985-2793